



- Geschikt voor gebruik buitenshuis, rekening houdend met vermelde IP waarden.
- Convient pour utilisation en extérieur, prenant en compte l'IP indiquée.
- Für Aussengebrauch geeignet, unter Berücksichtigung der angegebenen IP
- Suitable for outdoor use, taking the IP rating into consideration.



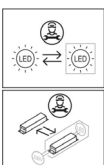
- Stoesel niet geschikt om te worden afgedekt met thermische isolatie.
- Luminaires non appropriées pour recouvrement d'un matériau isolant thermique.
- Luminaire not suitable for covering with insulating material.
- Das Gerät/ Die Leuchte darf nicht abgedeckt werden mit thermischer Isolation.

IP67

- Stofvrij. Beschermd tegen onderdomping tot 1m diep - 30 minuten lang.
- Protégé contre les poussières. Protégé contre l'immersion jusqu'à 1m de profondeur - pendant 30 minutes.
- Geschützt gegen Staub in schädigender Menge. Schützt gegen Eintauchen bis zu 1 m Tiefe - 30 Minuten lang.
- Protects against dust ingress. Protects against immersion up to 1m deep - for 30 minutes.



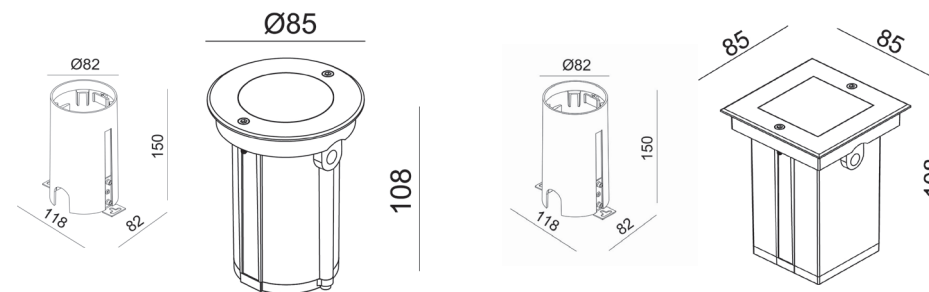
- Correcte verwijdering van dit product (elektrische en elektronische afval)
- Élimination correcte de ce produit (déchet d'équipements électriques et électroniques)
- Correct disposal of this product (electrical & electronic equipment waste)
- Korrekte Entsorgung dieses Produkts (elektromüll)



- Dit product bevat een lichtbron met energie-efficiëntieklasse E
- Ce produit contient une source lumineuse de classe d'efficacité énergétique E
- This product contains a light source of energy efficiency class E
- Dieses Produkt enthält eine Lichtquelle der Energieeffizienzklasse E

GEBRUIKSAANWIJZING
MODE D'EMPLOI
MONTAGEANLEITUNG
INSTALLATION MANUAL

Horizon mini



HMRGU10	Ø 85 x 108 mm	Horizon	6W	3000K	600 lm
HMSQGU10	85 x 85 x 108 mm	Horizon	6W	3000K	600 lm

incl. GU10 lamp - 50 cm cable - Recess box
Triac dimmable
Alu body / inox cover.



RoHS



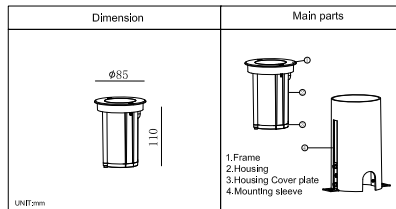
ErP



IP67

Installatie - Instructions d'installation - Installation - Montage

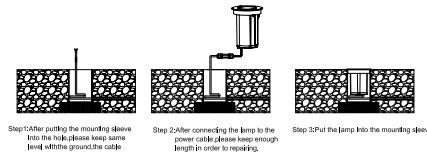
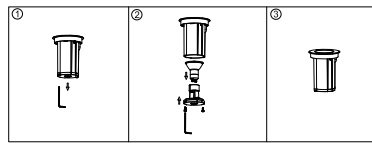
Horizon Mini Round



1.FEATURES

- 11w High power E-ground lighting.
- Standard of color temperature 2700-5000K.
- Input voltage: 240V AC. When you install this product, please according to the sticker information to do it.
- Please find a qualified electrician or technician to install this product.
- 11w IP67, do not soak into the water.
- Available environment temperature: 20°C ~ +40°C.

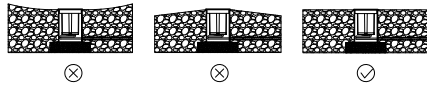
2.INSTALLATION



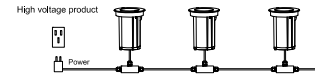
Step 1: After putting the mounting sleeve into the hole, please keep some level with the ground. The cable need to through into mounting sleeve. Please noted that gravel height ~ 25cm.

Step 2: After connecting the lamp to the power cable, please keep enough length in order to repairing.

Step 3: Put the lamp into the mounting sleeve.



3.WIRING DIAGRAM

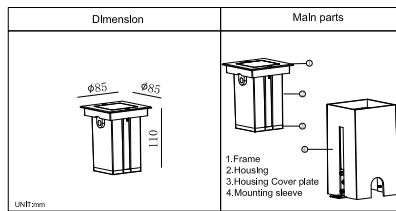


4.SPECIFICATION

- Housing: 12W Alu diecast powder coated T=90-80um, according with ISO class 1/ASTM class 4B
- Frame: Stainless steel SUS 316L
- Glass: 8mm Highness tempered glass
- Loading capacity: Max. 75kgs
- Available environment temperature: -20°C ~ +40°C
- Power cable: H05RN-F 3X1.2mm² (2.5m High voltage)
- Mounting sleeve: ABS

Model	Light source	Input Voltage(V)	Wattage(W)	Kc code
HMRGU10	6010-LED 6010	220-240	6010-MAX 50W LED 6010-MAX 60	10

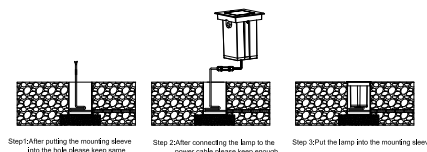
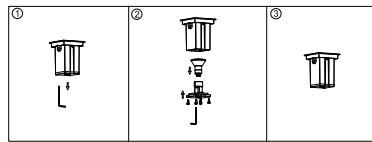
Horizon Mini Square



1.FEATURES

- 11w High power E-ground lighting.
- Standard of color temperature 2700-5000K.
- Input voltage: 240V AC. When you install this product, please according to the sticker information to do it.
- Please find a qualified electrician or technician to install this product.
- 11w IP67, do not soak into the water.
- Available environment temperature: 20°C ~ +40°C.

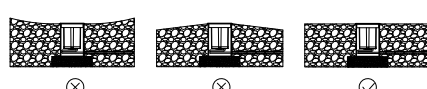
2.INSTALLATION



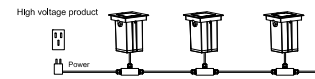
Step 1: After putting the mounting sleeve into the hole, please keep some level with the ground. The cable need to through into mounting sleeve. Please noted that gravel height ~ 25cm.

Step 2: After connecting the lamp to the power cable, please keep enough length in order to repairing.

Step 3: Put the lamp into the mounting sleeve.



3.WIRING DIAGRAM



4.SPECIFICATION

- Housing: 12W Alu diecast powder coated T=90-80um, according with ISO class 1/ASTM class 4B
- Frame: Stainless steel SUS 316L
- Glass: 8mm Highness tempered glass
- Loading capacity: Max. 75kgs
- Available environment temperature: -20°C ~ +40°C
- Power cable: H05RN-F 3X1.2mm² (2.5m High voltage)
- Mounting sleeve: ABS

Model	Light source	Input Voltage(V)	Wattage(W)	Kc code
HMSQGU10	6010-LED 6010	220-240	6010-MAX 50W LED 6010-MAX 60	10

Waarschuwing – Avertissement - Warnhinweise - Warning

• WAARSCHUWING !

Om elektrische schokken te voorkomen - Schakel altijd de elektriciteitsvoorziening uit vóór de installatie en het onderhoud.

• ATTENTION !

Pour éviter un choc électrique - Coupez toujours l'alimentation électrique avant l'installation et la maintenance.

• WARNING !

To prevent electrical shock - Always switch off electricity supply before installation and maintenance.

• WARNUNG !

Um einen Stromschlag zu verhindern.- Schalten Sie die Stromversorgung vor der Installation und Wartung ab.

- De elektrische installatie mag alleen door bevoegd personeel worden uitgevoerd volgens de voorschriften voor elektrische en mechanische veiligheid in uw land. Onjuiste plaatsing kan ernstige letsels en/of schade veroorzaken.
- L'installation électrique ne doit être effectuée que par du personnel qualifié, selon les règlements de sécurité électrique et mécanique dans votre pays. Une mauvaise installation peut entraîner des blessures graves et/ou des dommages matériels.
- The electrical installation should be carried out by qualified personal only, according to the regulations for electrical and mechanical safety in your country. Improper installation can result in serious injuries and/or damage to property.
- Die elektrische Installation sollte nur von qualifiziertem Personal nach den Vorschriften für elektrische und mechanische Sicherheit in Ihrem Land durchgeführt werden. Unsachgemäße Montage kann zu schweren Verletzungen und/oder Sachschäden führen.

- Om veiligheidsredenen en garantie is het verboden om wijzigingen aan het apparaat aan te brengen.
- Pour des raisons de sécurité et garantie, il est interdit d'apporter des modifications à l'appareil.
- For safety and guarantee reasons it is prohibited to make any modifications to the unit.
- Aus Sicherheitsgründen und für den Erhalt der Garantie ist es nicht erlaubt Änderungen an dem Gerät durchzuführen.